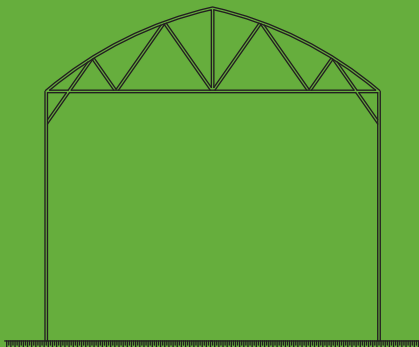




# Foil and Glass Greenhouse



Multi-Span Greenhouse



Bergakkerweg 15  
8071CC Nunspeet  
The Netherlands  
vankoot.ceres@gmail.com

**Foil Greenhouses:** MULTI-SPAN are technologically advanced, suitable for intensive cultivation in horticulture and floriculture, which most require a solid structure, combined with the most advanced ventilation and temperature control systems inside the greenhouse.

#### Features MULTI-SPAN

- Structure with 80x80 mm and 100x100 mm square section pillars and galvanized tube arches Ø 60 mm complete with tie rods; verified to withstand high snow load and wind pressure.
- The structure is entirely galvanized in Sendzimir Z 275.
- Single or double inflated plastic film cover (long lasting).
- Winding side openings complete with plastic film fastening profiles (single, double or up-down).
- Possibility of installing single or double rooftop openings.
- Possibility to motorize openings with computerized management.
- Front walls covered in film, alveolar, corrugated polycarbonate or sandwich panel.
- Optimized for the installation of advanced cultivation equipment and technologies.

MULTI-SPAN professional greenhouses are delivered in professional sizes (aprox. >1000m2).

**Foil Greenhouse:** TUNNEL made with arches in galvanized round tube Ø 60 mm available in different width and height versions. The installation is done by excavations in the ground without the need for concrete foundations. The advanced production system guarantees deliveries in a very short time, even in the case of orders for large areas and above all it makes possible a simple and fast installation in the field. This is a greenhouse model that today remains one of the most popular and requested models both in horticulture and in floriculture.





**Features TUNNEL**

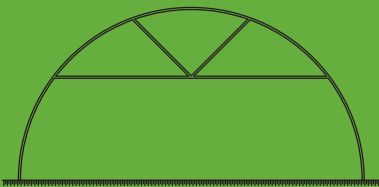
- Structure made of 2 half-arches in galvanized round tube with or without tie-rod (depending on the need of hanging support or to bear the snow load).
- The structure is entirely galvanized in Sendzimir Z 275.
- Front tie-rods (always in galvanized pipe) can also be provided, rooftop spacers and windbracings, rolling side openings (manual or automatic) to obtain a natural ventilation inside the tunnel.
- Single or double inflated plastic film cover (long lasting).
- Winding side openings with aluminum profiles or winding tube combined to plastic film tensioner.
- Possible motorization of openings with automatic management.
- Front walls in film, alveolar or corrugated polycarbonate.
- Installation in the ground with excavations, but without need of concrete castings.

TUNNEL professional greenhouses are delivered in professional sizes (aprox. >1000m<sup>2</sup>).

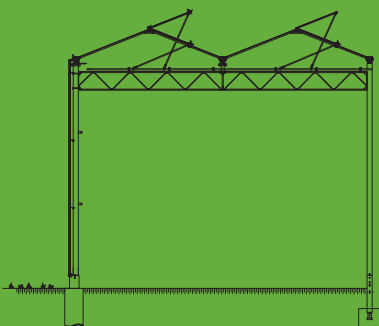
**Glass Greenhouse:** Within years Ceres B.V. has taken care of numerous turnkey greenhouse projects in Russia, Ukrain, Belarus Kazakhstan and Baltics. Engineering, construction and placement of different types of greenhouses and all the needed irrigation, grow, heating, climate, Co<sub>2</sub> and lighting systems is done by Ceres B.V.

Different glass greenhouse constructions can be delivered by Ceres B.V. Greenhouses with a Venlo roofing system are commonly used. They are constructed of galvanized steel trusses and aluminum profiles and can be delivered in different span width.

Glass professional greenhouses are delivered in professional sizes (aprox. >1000m<sup>2</sup>).



Tunnel Greenhouse



Glass Greenhouse



Bergakkerweg 15  
8071CC Nunspeet  
The Netherlands  
vankoot.ceres@gmail.com